



Specification Approval Sheet

Model: CR-14250

Prepared By/Date	Checked By/Date	Approved By/Date
Jonson	Yang Wei	Taylor

Customer Approval	Confirmation	Date

- Note: 1. Kindly please sign on the above and send it back to us if the sample is approved.
2. Kindly please contact us as soon as possible if the sample isn't approved. Thanks!

EAST(SHENZHEN)TECHNOLOGY CO.,LTD

Add: 11F,Taibang Technology Building,No.4 Road High-Tech South, Nanshan District,
Shenzhen City,China

Email : salesmanager@eunicell.com

Website: <http://www.eunicell.com>



CR-14250
Product Specification

1. Scope

This specification is suitable for the performance of the Eunicell Battery *Lithium and Manganese Dioxide* battery.

2. Model

CR-14250 600mAh

3. Reference Document

IEC60086-2: 2001 Primary batteries-Part 2: Physical and technological specifications, MOD

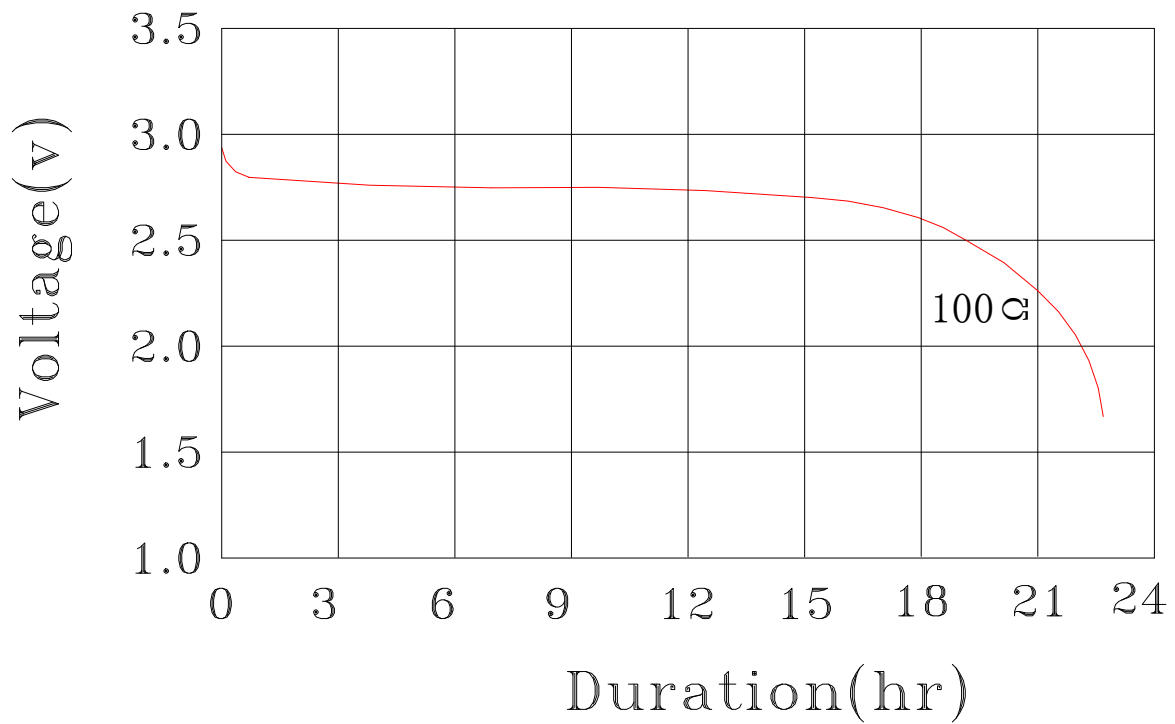
GB 8897.2: 2005 Primary batteries-Part 2: Physical and technological specifications

4. Specification

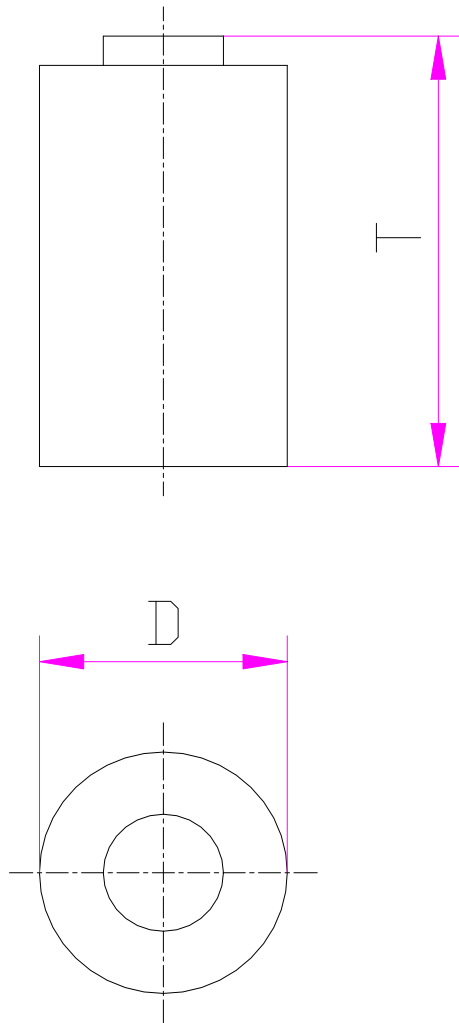
No.	Items	Specification	
1	Nominal Voltage	3.0 V	
2	Capacity (Discharge Current 1mA to 2.0V)	Nominal	600 mAh
		Minimum	550 mAh
3	Max. Discharge Current	Continuous	100 mA
		Pulse	400 mA
4	Discharge Cut-off Voltage	2.0 V	
5	Weight	Approx. 9 g	
6	Operating Temperature	-40 °C to 60 °C	
7	Storage Temperature	-10 °C to 40 °C	
8	Relative humidity	65 ± 20%	
9	Period of Validity	5 years	
10			

5. Test Conditions and Performance

Load characteristics



6. Drawing (unit: mm)



Items	Description	Dimension
D	Diameter	14.0+0.2/-0.2mm
H	Height	25+0.5/-0.5mm

7. Cautions in use

To ensure proper use of the battery please read the manual carefully before using it.



.Handling

- Do not expose to, dispose of the battery in fire.
- Do not put the battery in a charger or equipment with wrong terminals connected.
- Avoid shorting the battery
- Avoid excessive physical shock or vibration.
- Do not disassemble or deform the battery.
- Do not immerse in water.
- Do not use the battery mixed with other different make, type, or model batteries.
- Keep out of the reach of children.

.Storage

- Store the battery in a cool, dry and well-ventilated area.

.Disposal

- Regulations vary for different countries.
- Dispose of in accordance with local regulations.

8. Note

Any other items which are not covered in this specification shall be agreed by both parties.